

Tinn is not Notepad

<http://tinn.solarvoid.com>

and run R

Tinn-R version 0.0.8.8 r1.04

<http://www.sciviews.org/Tinn-R>

Adaptation of the Tinn as editor of scripts for the R

The Tinn is an editor in development with the Delphi 5 of the Borland, addressed to programmers, of free code under GPL (GNU Public License), developed under the operational system Windows.

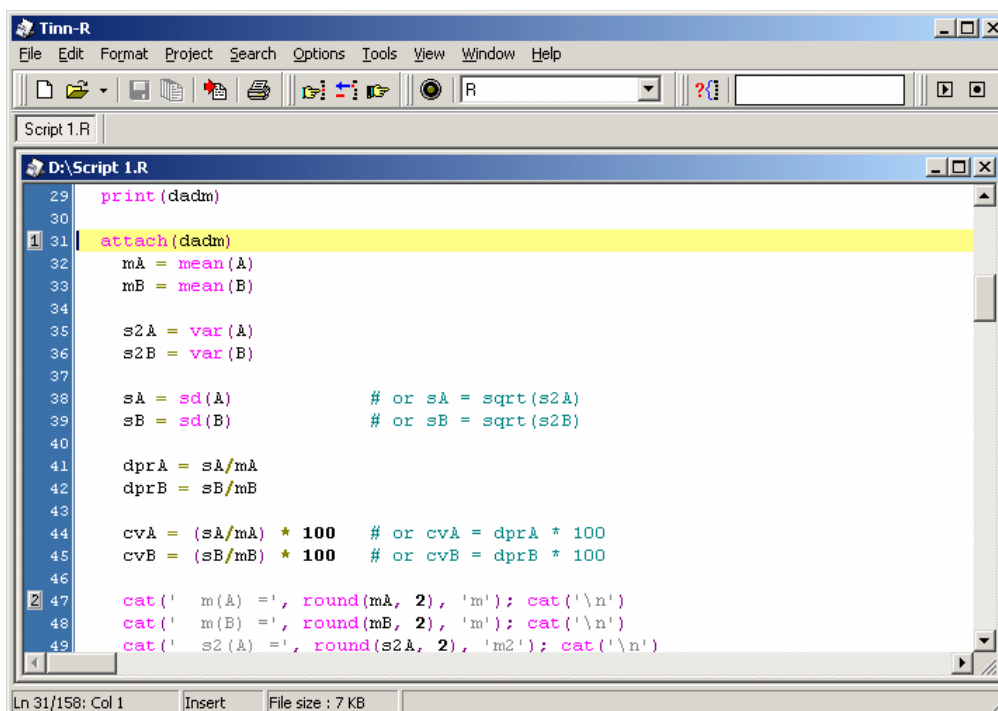
The adaptation as an editor of scripts for the R (Tinn-R) was made by José Cláudio Faria/DCET/UESC/Brasil and finalized on 07/31/2004. The main resource used for programming was a SendKeys component **which was kindly** donated to the project for MJT NET (<http://mjt.net.com/>). So far the adaptation was tested on Windows XP and Windows 2000.

Main characteristics (Tinn-R)

1. Highlight the R
2. Menu and toolbar specific for the R
3. Allows to work with the following graphic interfaces of R:
 - RGui
 - R Console
 - SciViews R Console (it is suggested to close the command editor of the SciViews)

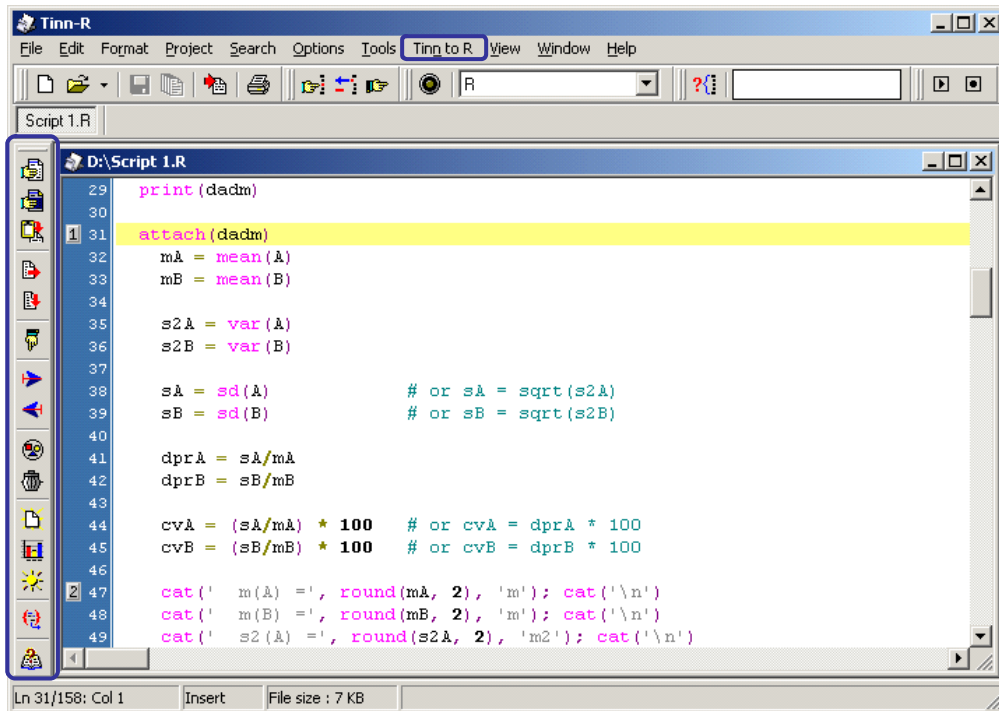
Tips for using it

1. If R is not running the specific menu and toolbar, it will not be visualized:



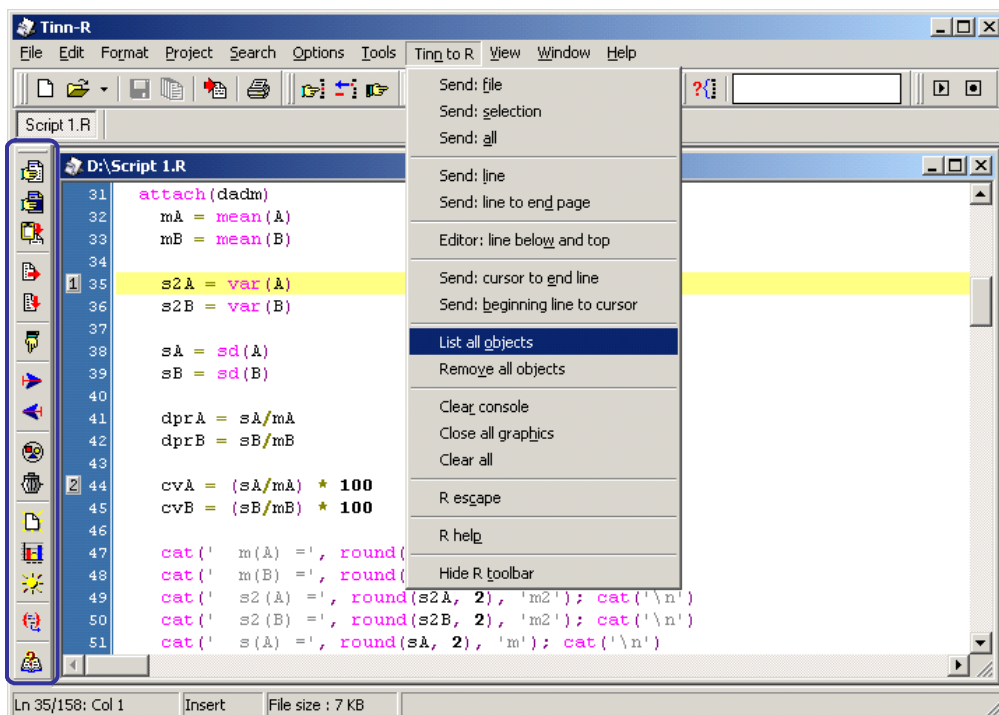
```
29 print (dactm)
30
31 attach (dactm)
32 mA = mean (A)
33 mB = mean (B)
34
35 s2A = var (A)
36 s2B = var (B)
37
38 sA = sd (A)           # or sA = sqrt (s2A)
39 sB = sd (B)           # or sB = sqrt (s2B)
40
41 dprA = sA/mA
42 dprB = sB/mB
43
44 cvA = (sA/mA) * 100  # or cvA = dprA * 100
45 cvB = (sB/mB) * 100  # or cvB = dprB * 100
46
47 cat (' m (A) =', round (mA, 2), 'm'); cat ('\n')
48 cat (' m (B) =', round (mB, 2), 'm'); cat ('\n')
49 cat (' s2 (A) =', round (s2A, 2), 'm2'); cat ('\n')
```

2. Only if R is running the specific menu and toolbar, it can be visualized:

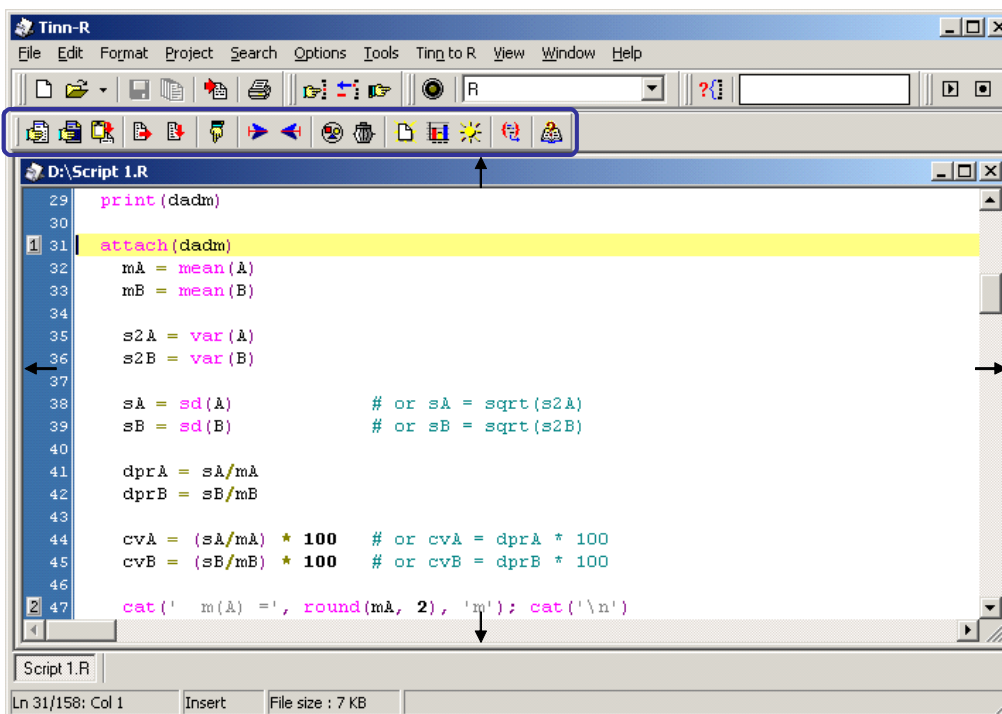
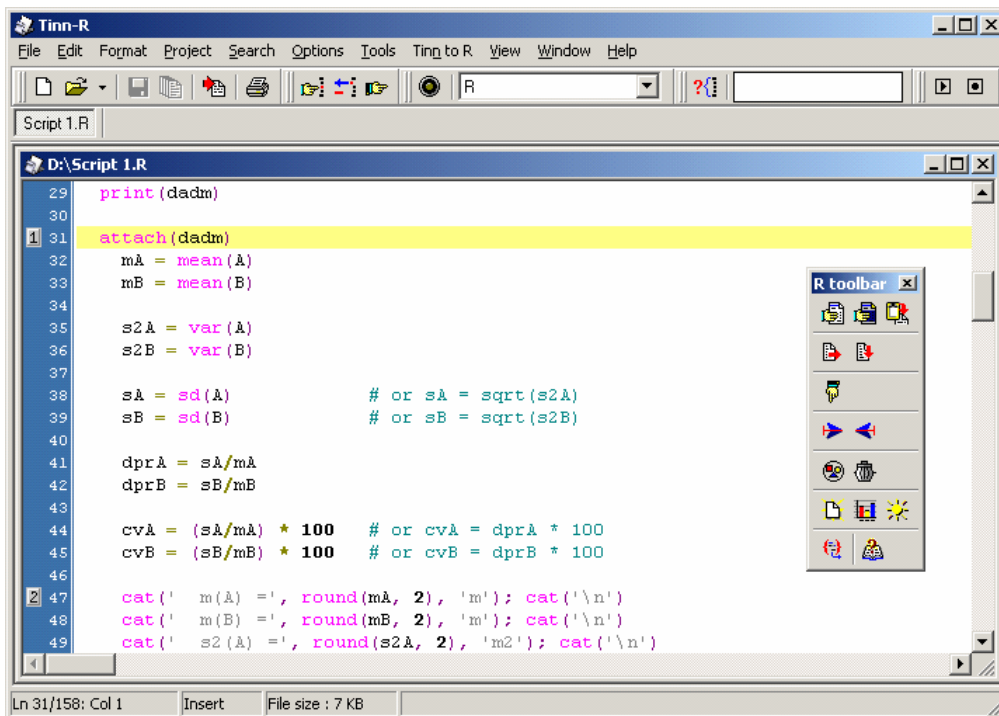


3. Don't use any accents and do not use symbols (@, #, \$, %, ^, &) in path or in files names of scripts of the R! This can cause an irregular functioning of the programs.

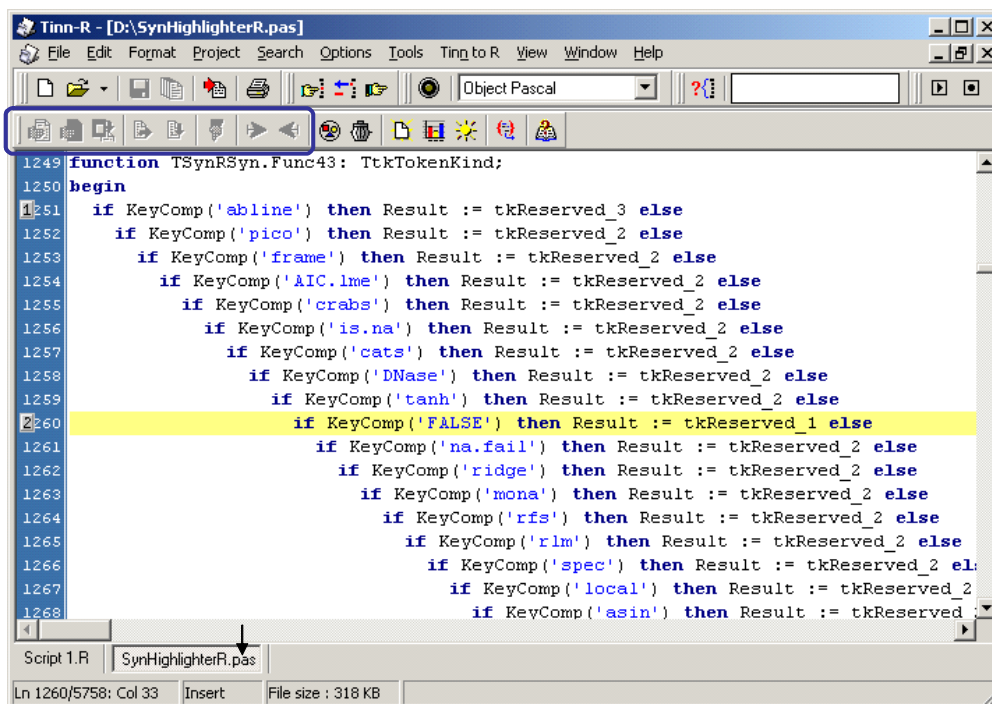
4. Details of the specific menu:



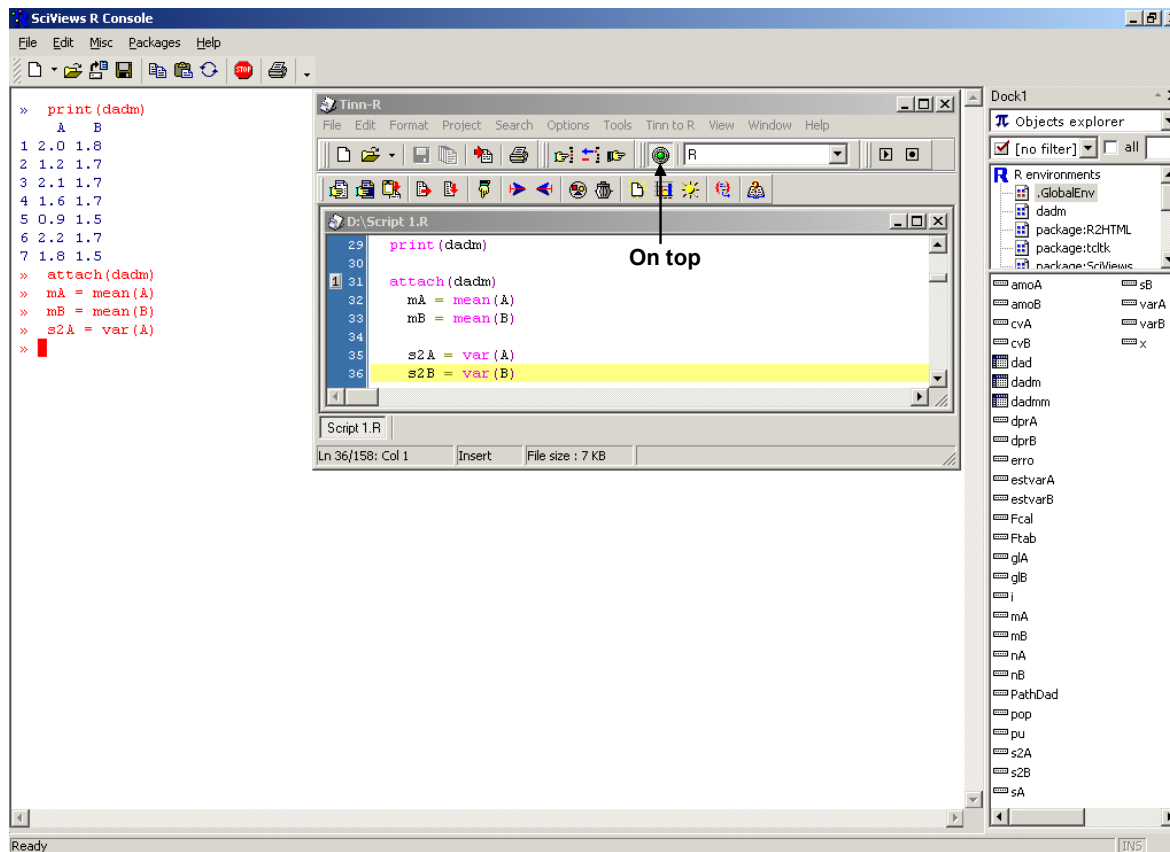
5. The toolbar can be placed conveniently on the screen for the user:



6. The files with the extensions *.r, *.R, *.q and *.Q are recognized as scripts of the R. If the file does not have these extensions, or if it has not been saved, some logical options associated are disabled:



7. To send line by line of the Tinn for the R it is recommended to dispose the windows for the two applications (RGui and Tinn) in a satisfactory way for the purposes and set the option **on top** of the Tinn:



Suggestions: joseclaudio.faria@terra.com.br

For more details see help of Tinn.

I am grateful to those who have tested this project, who have given suggestions and have stimulated it in its preliminary versions, especially Philippe Grosjean (coordinator of the team of development of the SciViews: <http://www.sciviews.org/main.htm>) and Anderson Barbieri (coordinator of the team of development of the Notes editor: <http://notes.codigolivres.org.br/>).

José Cláudio Faria/DCET/UESC

Ilhéus/Bahia/Brasil

08/05/2004